



**Food Security Analyst (Fellow or Volunteer)
Assessment & Targeting Unit (APPF)
Analysis, Planning, and Performance (APP) Division
Rome, Italy**

BRIEF DESCRIPTION OF THE DIVISION

The Analysis, Planning, and Performance (APP) Division is instrumental in advancing WFP's Zero Hunger mandate by placing high-quality evidence at the core of strategic and operational decision-making, resource mobilization, and accountability. This approach ensures that operations are not only efficient and cost-effective but also transparent and responsive to the needs of beneficiaries. APP works to ensure that decision-making within WFP is grounded in credible, relevant, and timely data. This is achieved through a structured approach that spans the full programme lifecycle, from conducting initial assessments that inform programme design to monitoring outcomes for ongoing projects.

When faced with an emergency or dealing with structural food insecurity, information can save lives. Who are the food insecure or vulnerable people? How many are there? Where do they live? Why are they food insecure and vulnerable? How is the situation likely to evolve and what are the risks threatening them?

Through food security analysis, based on household surveys – whether baseline or emergency food security assessments – WFP provides actionable food security information for each country in which it works. By combining traditional assessment methods with emerging technologies, WFP is able to identify food insecure populations around the world and to establish the underlying causes of food insecurity. Furthermore, WFP conducts joint food security analysis with other stakeholders as part of the Integrated Phase Classification (IPC) for acute food insecurity.

A key component to ensuring that evidence is accurate is to provide learning materials and guidelines on key indicators and data collection methods for WFP country offices as well as external partners. This includes developing technical guidelines, presentations, webinars and course materials, as well as developing and updating standard codes in different statistical languages. WFP is hosting these resources on the Vulnerability Analysis and Mapping ([VAM](#)) [Resource Centre](#), a platform used for sharing essential guidance and resources relevant to food security assessments.

GENERAL INFORMATION

- **Number of available positions: 1**
- **Country of assignment: Italy**
- **City of assignment: Rome**
- **Hiring Unit: Assessment & Targeting Unit (APPF)**
- **Supervisor: Vulnerability Analysis and Mapping (VAM) officer**
- **Working arrangement: In-person**
- **Duration of assignment: up to 12 months**
- **Expected Starting Date: Summer 2026**

DUTIES AND RESPONSIBILITIES

Review current technical guidelines and presentations.

- Support the maintenance of the VAM Resource Centre.
- Conduct analysis of various topics related to food security.
- Develop communication products.
- Conduct literature reviews.
- Any ad hoc tasks as requested by the supervisor.

STANDARD MINIMUM QUALIFICATIONS

- Be an undergraduate or master's student or a graduate in social science, economics, statistics, development, international relations, or related field.
- Excellent written and spoken English is required (proficiency/level C). Working knowledge of French or Spanish is an asset.
- Excellent skills in PowerPoint.
- Some familiarity with at least one statistical software package is an asset.

TRAINING COMPONENTS

Throughout their assignment the selected candidate has access to an industry leading learning platform, weLearn. Depending on opportunities and availability of funds, he/she may participate in WFP workshops or seminars, as appropriate.

LEARNING ELEMENTS

At the end of the assignment, the selected candidate should:

- Be familiar with the global food security situation, including hunger hotspots and the drivers of extreme food insecurity.
- Be familiar with food security methodology, including key indicators.
- Be able to conduct basic food security analysis that aims at informing WFP decision-making.
- Have developed multiple information products to share knowledge about the food security situation.
- Complete the Integrated Food Security Phase Classification (IPC) v. 3.0 Acute Food Insecurity training.

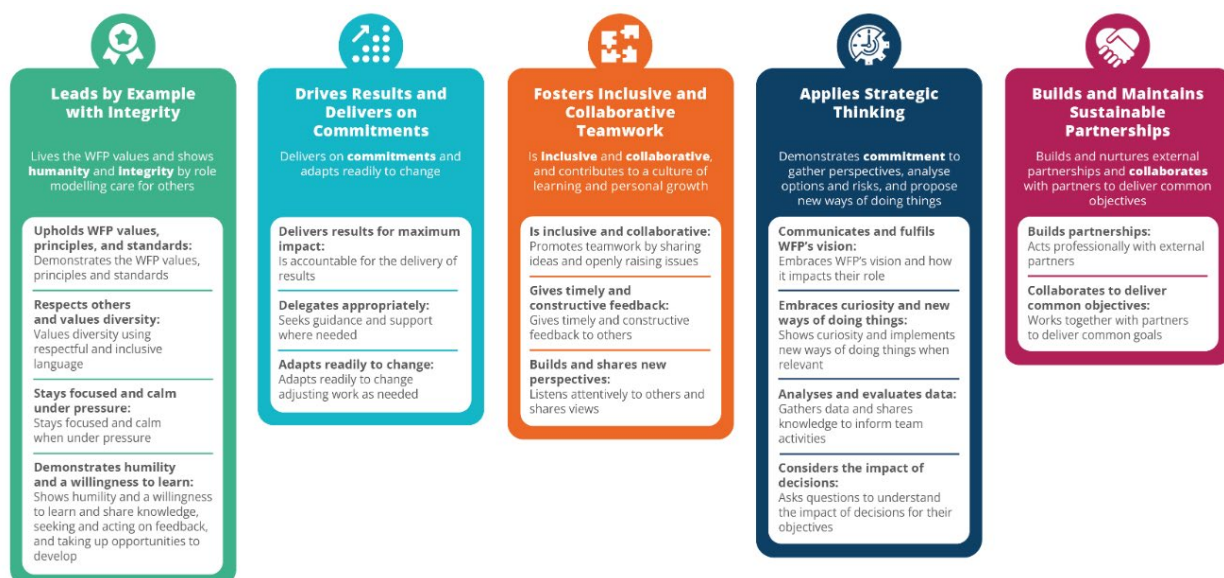
TYPE OF ASSIGNMENT

This opportunity is particularly well-suited for students or recent graduates seeking practical experience in an international organization. It offers valuable exposure to WFP's operations and the chance to contribute meaningfully to its mission.

The selected candidate will receive IT equipment and training material; however, financial compensation and medical coverage are not provided by WFP. Applicants may seek alternative funding opportunities, such as university grants or external scholarships, to support their assignment. Regarding the contract modality, if the student receives funding from the university or a third-party sponsor, they will be hired as a Fellow (If the assignment is unpaid, they will be engaged as a WFP Volunteer).

WFP LEADERSHIP FRAMEWORK

These are the common standards of behaviour that guide HOW we work together to accomplish our mission.



Different expectations of behaviour are defined depending on your grade and role/responsibilities within WFP.

All employment decisions are made on the basis of organizational needs, job requirements, merit, and individual qualifications. WFP is committed to providing an inclusive work environment free of sexual exploitation and abuse, all forms of discrimination, any kind of harassment, sexual harassment, and abuse of authority. Therefore, all selected candidates will undergo rigorous reference and background checks. No appointment under any kind of contract will be offered to members of the UN Advisory Committee on Administrative and Budgetary Questions (ACABQ), International Civil Service Commission (ICSC), FAO Finance Committee, WFP External Auditor, WFP Audit Committee, Joint Inspection Unit (JIU) and other similar bodies within the United Nations system with oversight responsibilities over WFP, both during their service and within three years of ceasing that service.

Saving Lives
Changing Lives